



MASTER PAINTING

& home services

EXTERIOR

Exterior paint has to survive being exposed to moisture and huge temperature changes. It also has to resist fading, chipping and peeling. Because of these reasons, the resins used in the manufacture of exterior paints have to be softer. This type of paint is exposed to various weather conditions.



Therefore, it has to provide protection against moisture caused by rain and snow, and ultraviolet radiation caused by sunlight. It also has to protect against fungal growth.

Includes: exterior painting in general (walls, trim, foundation, soffit...)

INTERIOR

For interior paints, huge temperature changes and moisture are not an issue. Therefore, the resins used in their manufacture can be more rigid. This, in turn, cuts down on smearing and scuffing. Interior paint is formulated in such a way that it can withstand abrasion.



As it occupies the same space as people, it is also designed to be more delicate than exterior paint.

Includes: interior painting in general (walls, trim, ceiling, radiators, heaters, baseboard...)

POWER WASH

For interior paints, huge temperature changes and moisture are not an issue. Therefore, the resins used in their manufacture can be more rigid.

This, in turn, cuts down on smearing and scuffing. Interior paint is formulated in such a way that it can withstand abrasion.



As it occupies the same space as people, it is also designed to be more delicate than exterior paint.

Includes: interior painting in general (walls, trim, ceiling, radiators, heaters, baseboard...)

SMALL PLASTERING

Plaster repairs are an occasional requirement if you own an old home. These old plastered walls bring so much character to a period home, but to keep them in good condition it's essential to be on the look out for early signs of damage.

Includes: Drywall Repair, Ceiling Repair, ceiling drywall repair, plaster repair...

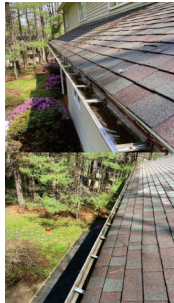


GUTTER CLEANING

Gutter cleaning is the process of removing any debris, dirt, and leaves from your gutters and downspouts that clog your gutter system and stop rainwater from flowing freely from the roof to the ground.

Professionals may scoop the debris by hand or by machine.

Includes: gutter scooping (special tool or by hand), downspout cleaning, repairs...

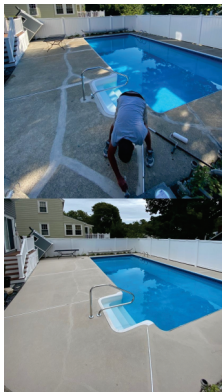


DECKS

The complete refinishing process for a wood deck may include inspection, cleaning, power washing, sanding, staining, & sealing. Not all refinishing projects will include all steps however.

Our deck experts will evaluate your deck's needs and make your weathered old deck look like new again.

We also specialize in deep cleaning PVC/composite decking to keep your investment free of mold & stains.



Includes:
power
washing,
cleaning,
sanding,
staining,
painting,
sealing...

RESIDENTIAL

Home painting services are provided by our qualified painters. Both the exterior and interior of the home are well prepared and painted. It takes less time and fewer painters to complete a residential paint job compared to commercial projects.



Includes: Interior and Exterior Painting, Cabinet Painting, Wallpaper Removal, Plaster and Drywall Repairs, Garage Painting

COMMERCIAL

Commercial painting contractors focus on projects of various sizes. Larger projects require a bigger crew, more complex equipment, and possibly different working shifts to get the job done to meet the deadline.

Includes: office buildings, apartments, manufacturing facilities, schools, and hospitals





MASTER PAINTING

& home services



(508) 904.9761 (508) 431.9314



masterpainting_ma



contact@masterpaintingusa.com



www.masterpaintingusa.com

